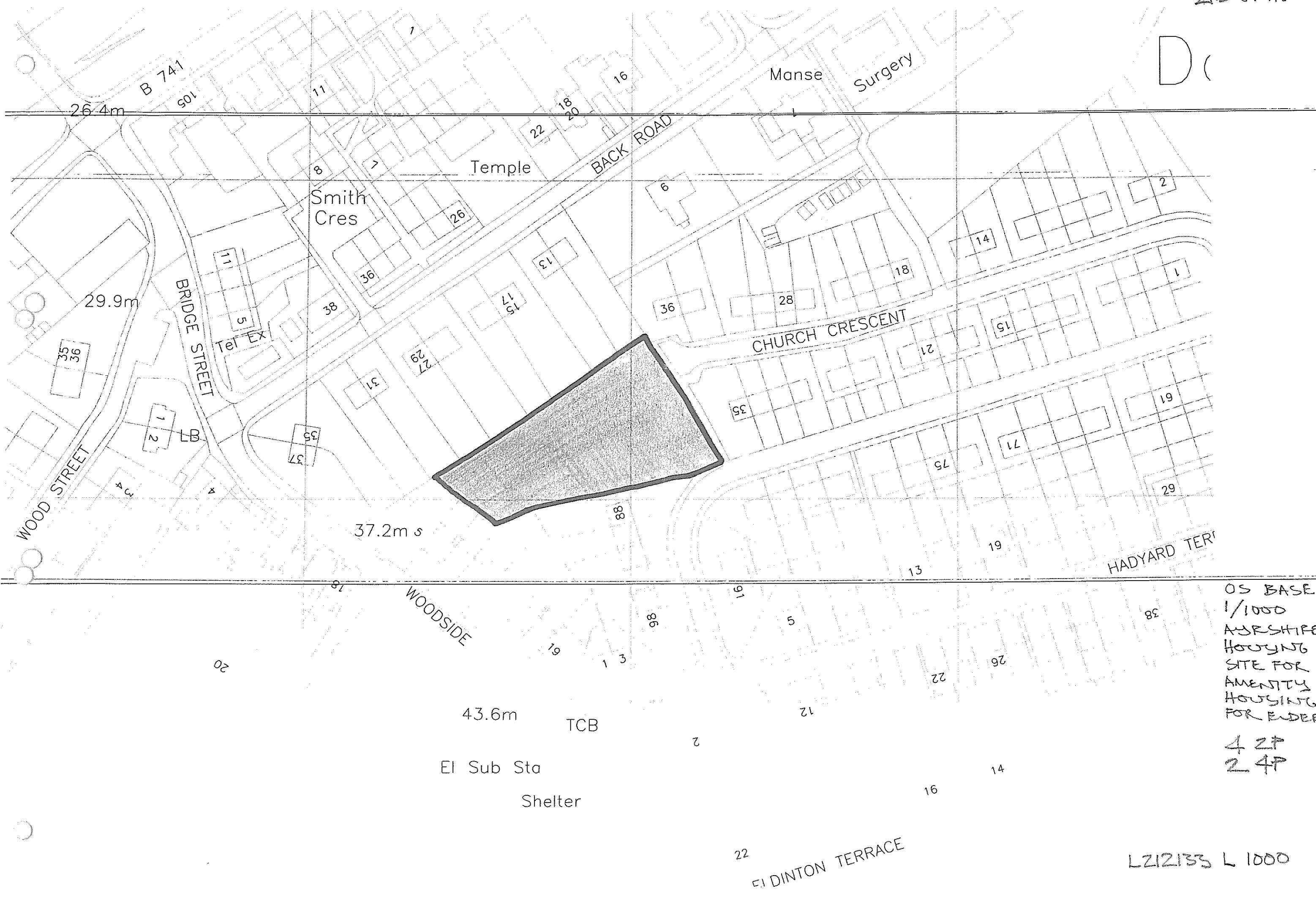


2ND OPTION

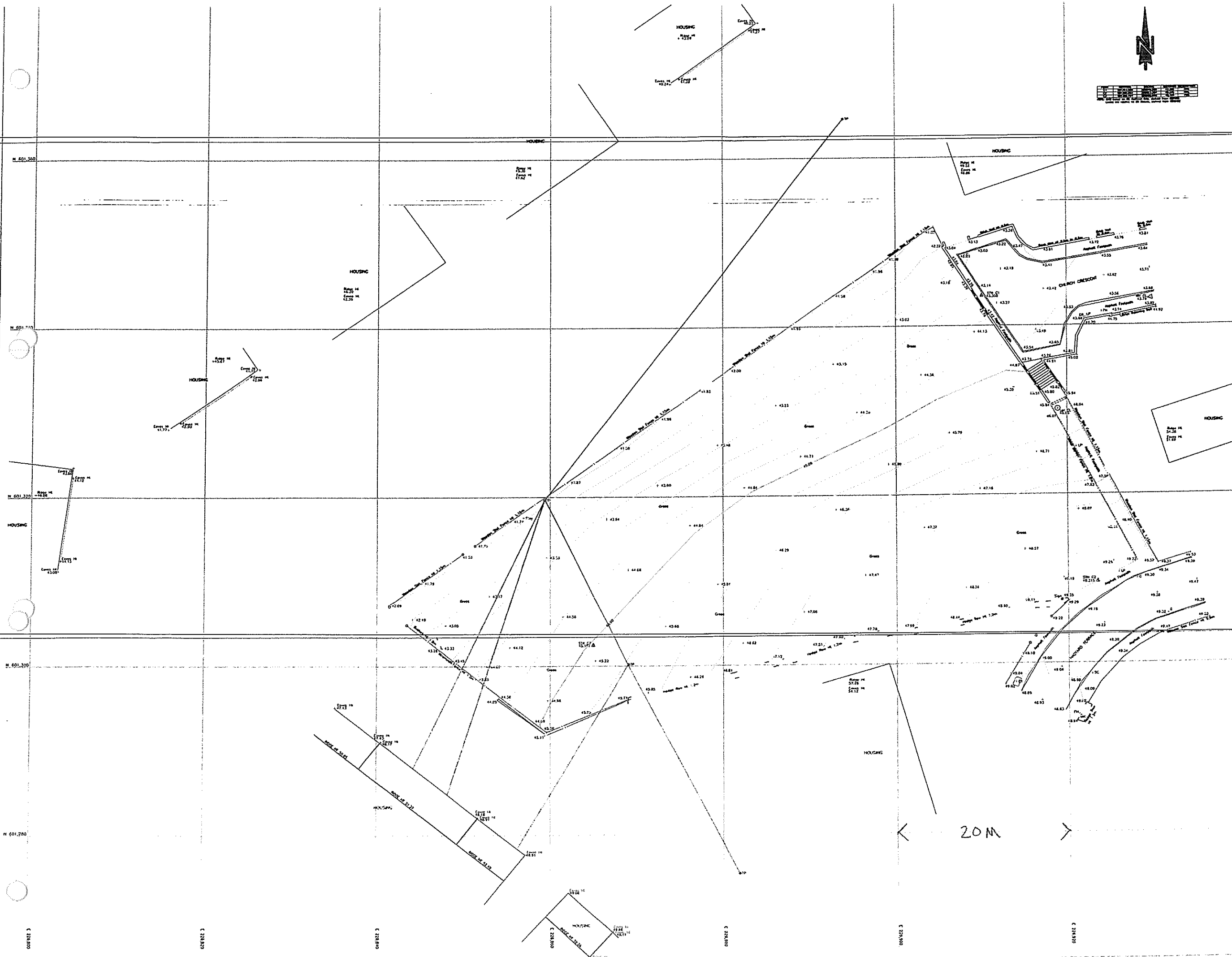
D(



OS BASE
 1/1000
 Ayrshire
 HOUSING
 SITE FOR
 AMENITY
 HOUSING
 FOR ELDER

4 2P
 2 4P

LZ12133 L 1000



	Road		Building
	Kerb		Open Field Building
	Drain Fello		Minor Building
	Surface		Footpath
	Fence		Foundation
	Wall		Contour
	Vergé		Electric Overhead Transmission
	Terrain Line		Boundary
	Waterline		NOTE: All contours marked in red are preliminary
	Ditch		
	Pipe		
	Open Drain		
	Railway		

FOLIAGE

	Bush		Foliage
	Individual Domestic Tree Trunk Diameter Greater Than 0.2m		Hedge
	Individual Domestic Tree Trunk Diameter Greater Than 0.2m		Drain Trench Sinking
	Shrub		

SYMBOLS

	Control Station 10.00m		First Level 10.00m
	Spot Level 10.00m		Set Level 10.00m
	Threshold Level 10.00m		Twp Pt
	Elevation 10.00m		East Level 10.00m
	Water Level 10.00m		Ramp Level 10.00m

GRAVAGE

	Bush Trap		Gully
	Down Pipe		Yoke Out

SERVICES

	Air Valve		Meter
	Air Conditioning Unit		Meter Cover
	British Telecom		Manhole Cover Level 10.00m
	Cable Cloud Television		Rising Eye
	Earthing Rod		Stop Clock
	Electricity Box		Stop Valve
	Electricity Pole		Telegraph Pole
	Fire Hydrant		Vent
	Gas Valve		Valve Meter
	Gas Meter Cover		Cable Trench

STREET FURNITURE

	Barrier		Post Box
	Bus Stop		Post / Gate Pt
	Junction Box		Reflector Pole
	Lamp Post		Road Sign
	Lighting		Sign (Metric)
	Litter Bin		Stop Sign
	Parking Meter		Tree
	Warning Flag		Enclosure Gas Box
			Traffic Light

1:1000 - 4.0m horizontal scale, 1:1000 vertical scale, 1:1000 horizontal scale, 1:1000 vertical scale.
 2. Symbols and information in this plan are derived from the following:

Reference	Description

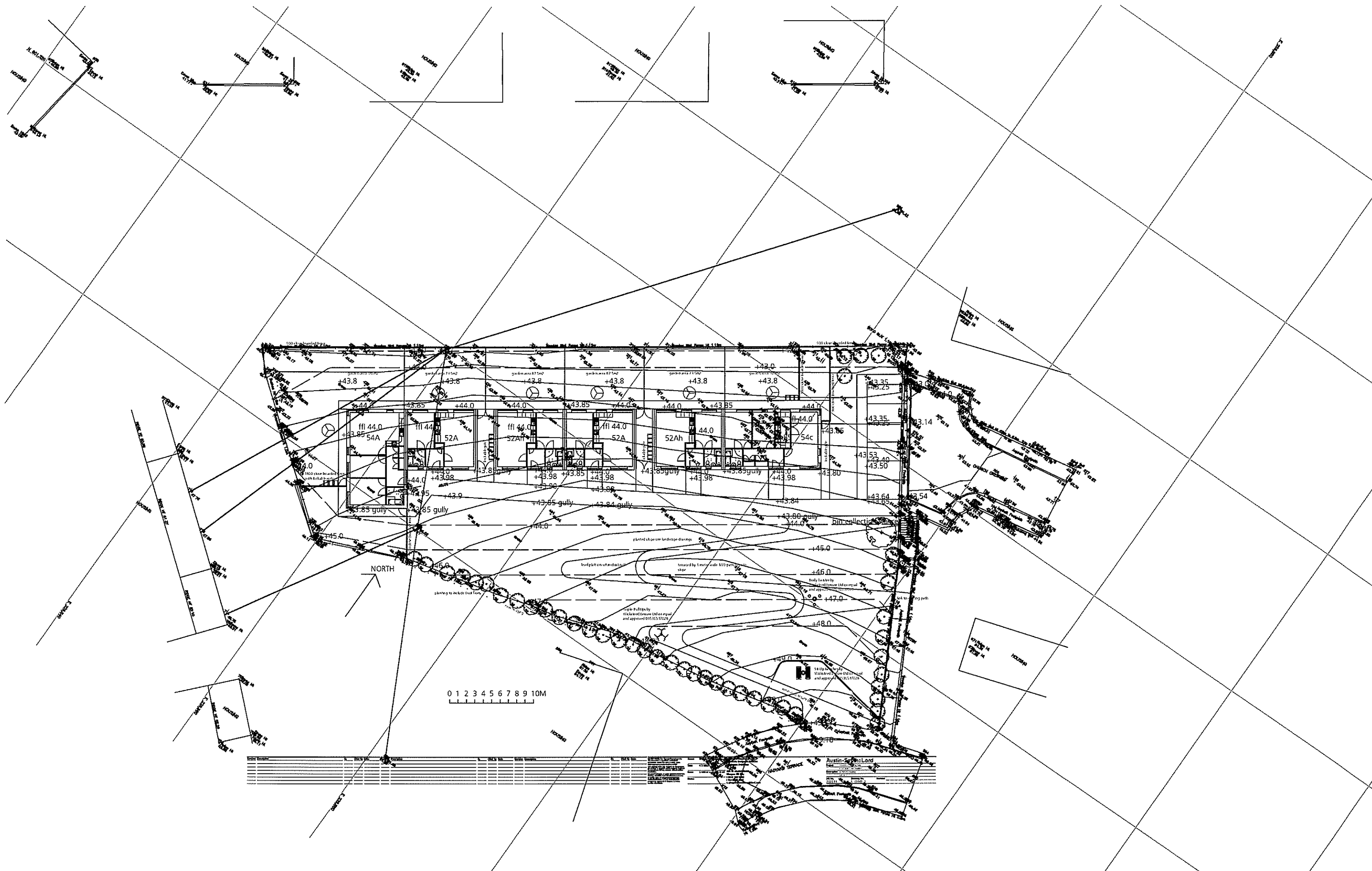
Hodyard Terrace Daily

Topographic Survey

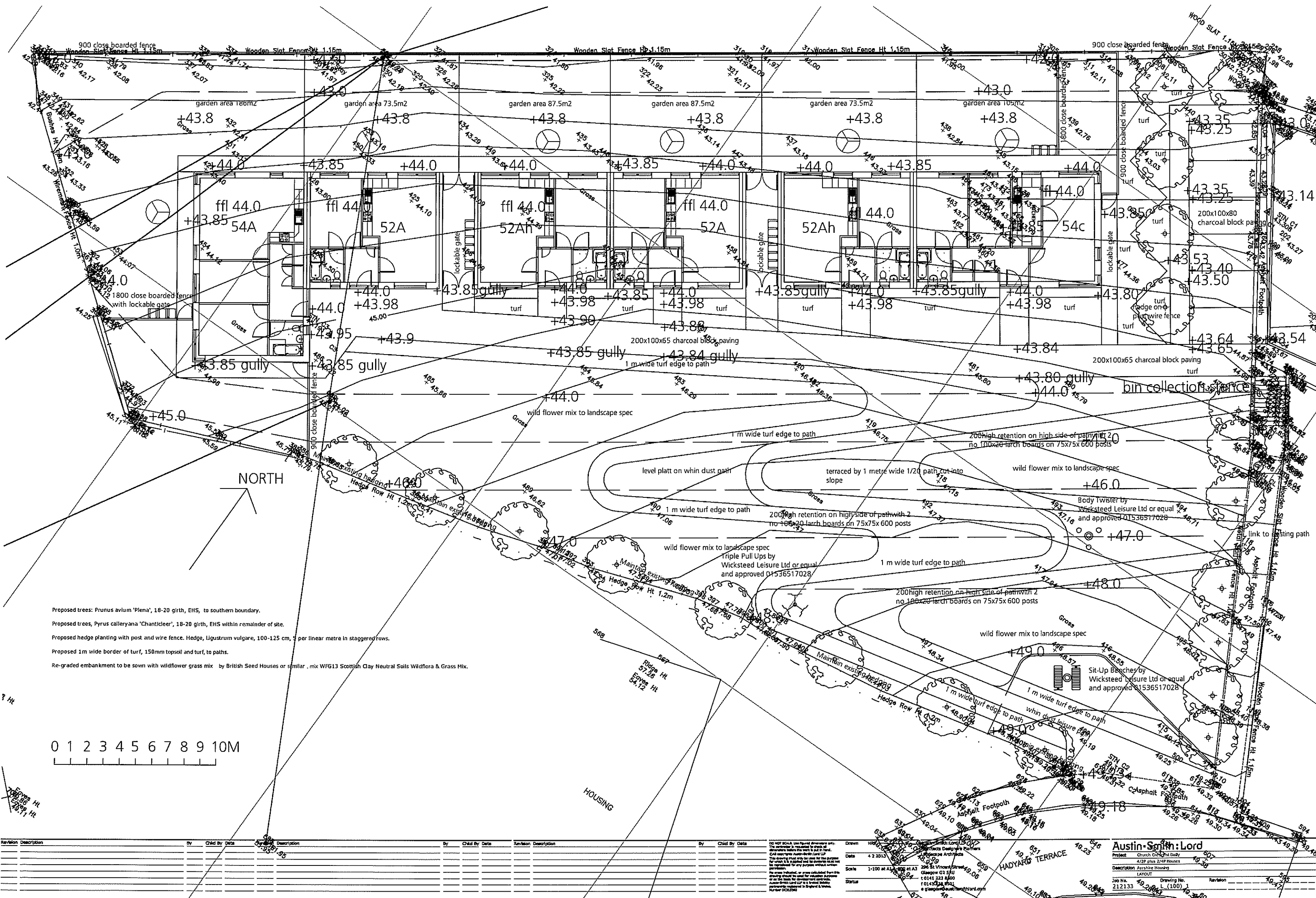
Author	Client	Project No.	Scale	Date
C.D.	S.C.	20.006	1:200	A

AUSTIN SMITH LORD
 296 St Vincent Street
 Glasgow G2 5RU
 0141 223 8500

LOY
 Chartered Land Sur

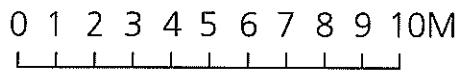


Rev	By	Chk	Date	Description



NORTH

- Proposed trees: Prunus avium 'Plena', 18-20 girth, EHS, to southern boundary.
- Proposed trees: Pyrus calleryana 'Chanticleer', 18-20 girth, EHS within remainder of site.
- Proposed hedge planting with post and wire fence. Hedge, Ligustrum vulgare, 100-125 cm, 5 per linear metre in staggered rows.
- Proposed 1m wide border of turf, 150mm topsoil and turf, to paths.
- Re-graded embankment to be sown with wildflower grass mix by British Seed Houses or similar, mix WFG13 Scottish Clay Neutral Soils Wildflora & Grass Mix.



Revision	Description	By	Check By	Date	Description	By	Check By	Date

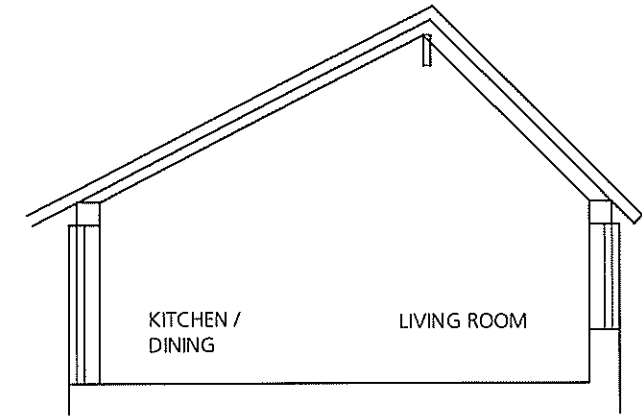
Drawn: HRS
 Date: 4.2.2013
 Scale: 1:100 at A3
 Status:
 Project: Church of St. Mary
 Description: 4/2P plus 2/4P Houses
 Drawing No: L (100) 1
 Revision: 30.4.13

MANUAL CONTROLS TO COMPLY WITH
BUILDING REG GUIDENCE NOTE 4.8.6
INCL ALL SWITCHES SOCKETS ETC 350MM
FROM INTERNAL WALL AND AS DRW
A-(22)-B
RODDING ACCESS AT BASE OF SVP

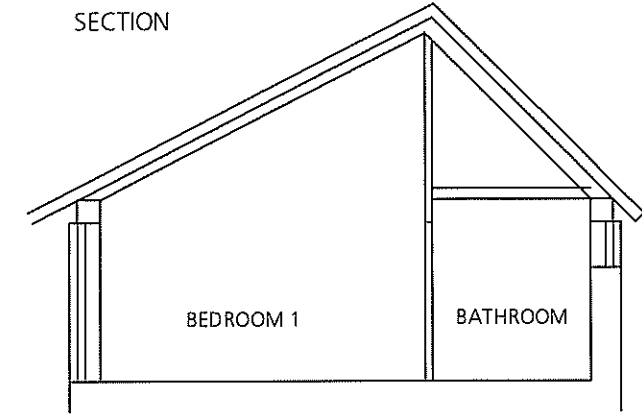
R REVERSIBLE
F FIXED GLAZING
EE EMERGENCY ESCAPE 0.33M2 MIN +
450mm MIN
EA EMERGENCY ACCESS 0.33M2 MIN +
450mm MIN
PD PATIO DOOR
SB SAND BLASTED REVERSIBLE
SBP SAND BSTD DOUBLE GLAZED FIXED
PANEL

SYMBOL DESCRIPTION

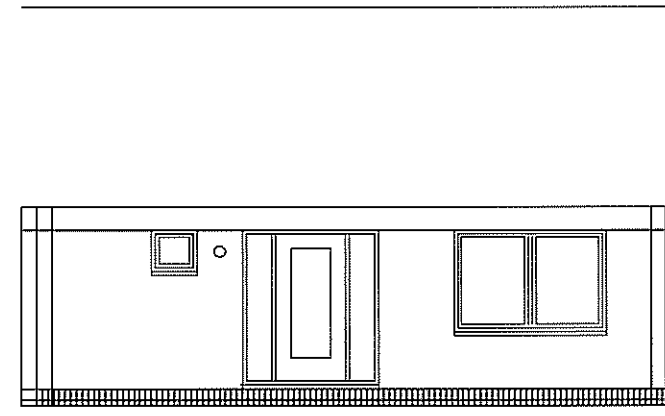
- CONSUMER UNIT WITH ELCB + SP METER, CABLE HEAD ETC
- LIGHT SWITCH 1WAY DOOR HANDLE HEIGHT
- LIGHT SWITCH 2WAY DOOR HANDLE HEIGHT
- LIGHT SWITCH INTERMEDIATE DOOR HANDLE HEIGHT
- 1 GANG 13A SW. SOCKET (FLUSH)
- 2 GANG 13A SW. SOCKET (FLUSH)
- 2 GANG 13A SW. SOCKET (FLUSH) 150 ABOVE WORK TOP
- UNSWITCHED FUSED SPUR UNIT
- D.P. SWITCHED FUSED SPUR UNIT
- SMOKE DETECTOR
- PENDANT LIGHT FITTING BULB HOLDER AT 2.200 F.FFL
- WALL MOUNTED LIGHT FITTING AT 2.000 F.FFL
- 1.200 L SINGLE TUBE FLUORESCENT LIGHT
- BELL PUSH
- DOOR BELL Fredland D6 431 recessed (into jamb) illuminated
- TELEPHONE OUTLET
- TV + FM OUTLET
- SHAVER SOCKET + STRIP LIGHT
- COOKER EXTRACT 30L/SEC WITH ACCESSIBLE ISOLATING SWITCH
- EXTRACT FAN 15L/SEC
- COOKER SPUR
- COOKER CONTROL
- INSTANTANEOUS ELECTRIC SHOWER
- BOILER + ELECT SUPPLY + CONTROLS
- RADIATOR TOP OF RAD 100mm MIN BELOW CILL BOARD
- SEMI SUBMERGED GAS METER BOX
- ACCESSIBLE ISOLATING SWITCH REQ FOR R'FRIDGE AND WM
- PASSIVENT
- HEAT DETECTOR



SECTION

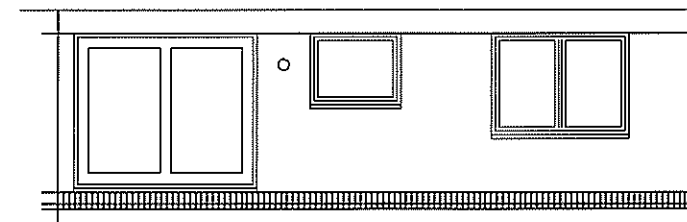


SECTION

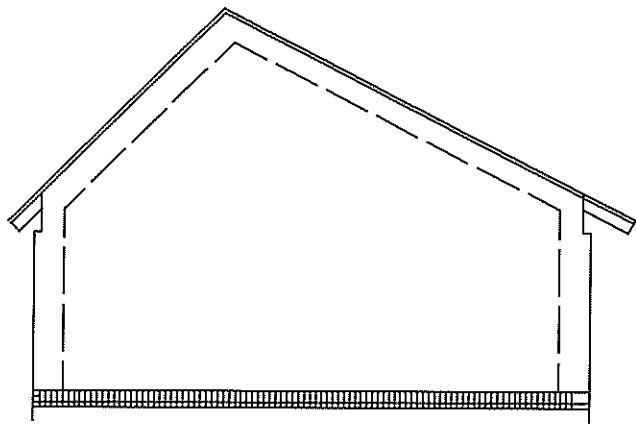


ENTRANCE ELEVATION

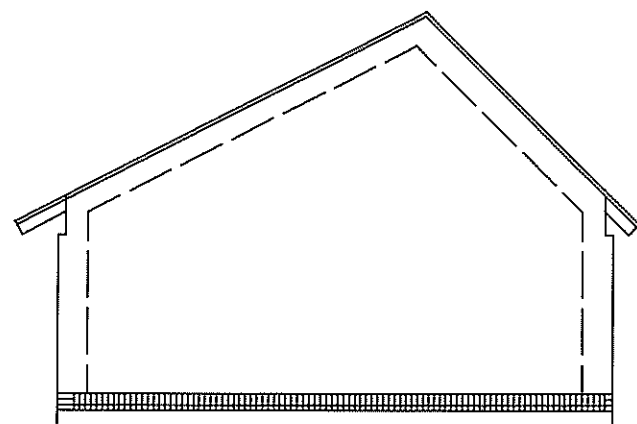
8300



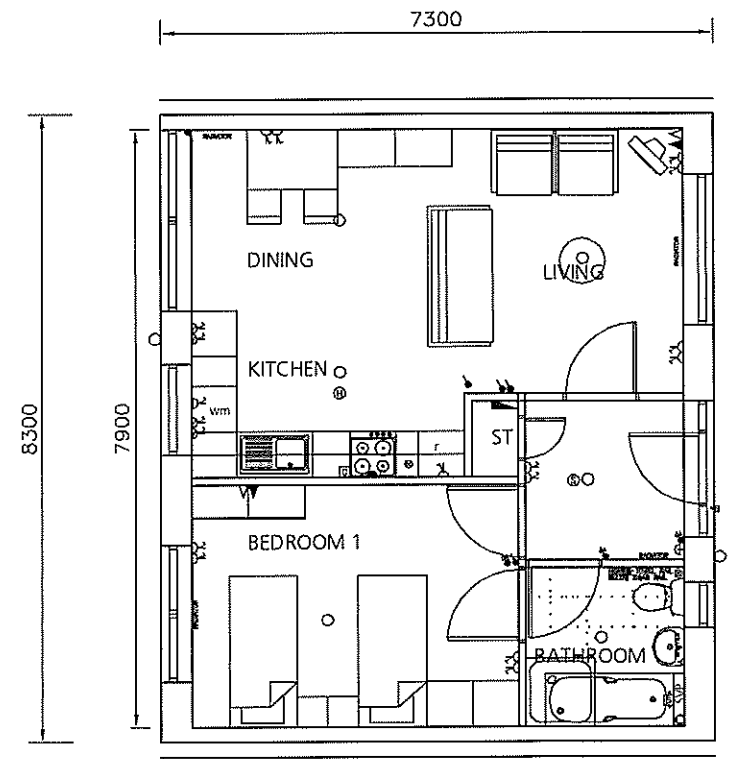
LIVINGROOM ELEVATION



LIVINGROOM Party wall



BEDROOM Party Wall



2P GROUND FLOOR
51.35 m2

Revision	Description	By	Date	Revision	Description	By	Date	Revision	Description	By	Date	Status	Drawn	HR	Date	Checked	GR	Date	Scale	Status	Project	Project	Description	Job No.	Drawing No.	Revision

Austin Smith Lord LLP
Architects Designers Planners
Landscape Architects

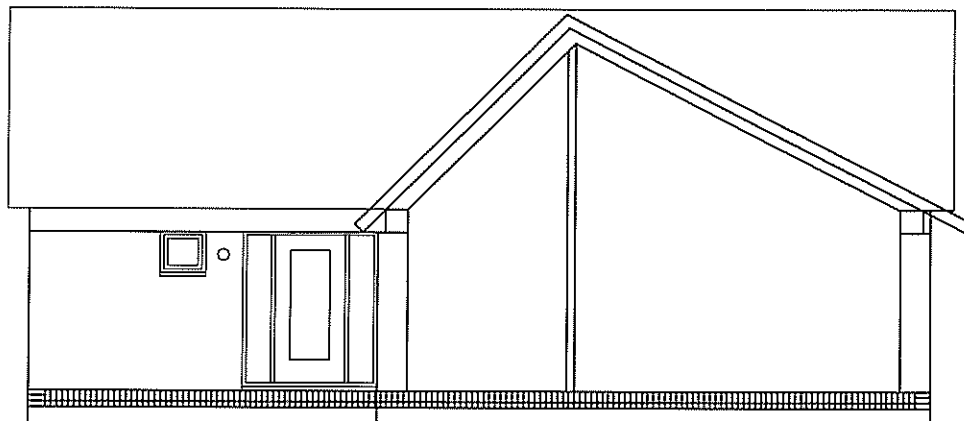
202 Bath Street
Glasgow G2 4HW
t 0141 331 0901
f 0141 331 0901
e glasgow@austinsmithlord.com

Austin Smith Lord

Project: **Harvard Terrace**

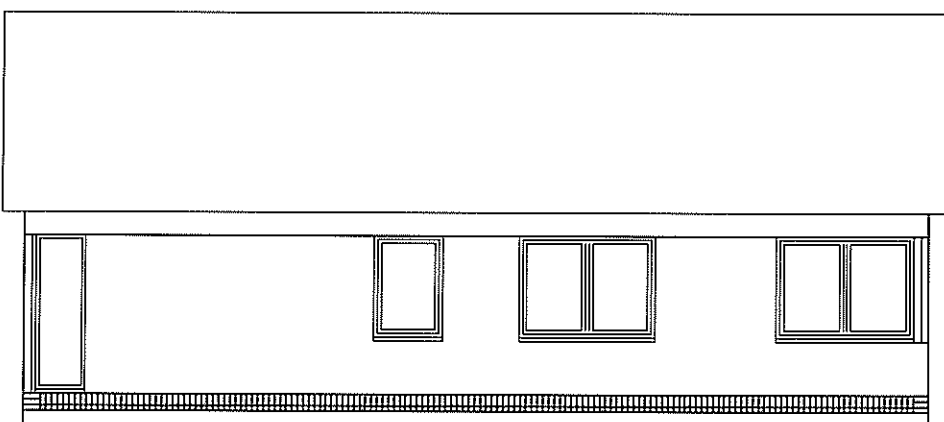
Description: **2 PERSON HOUSE TYPE**

Job No: **212133** Drawing No: **(L) 52A**



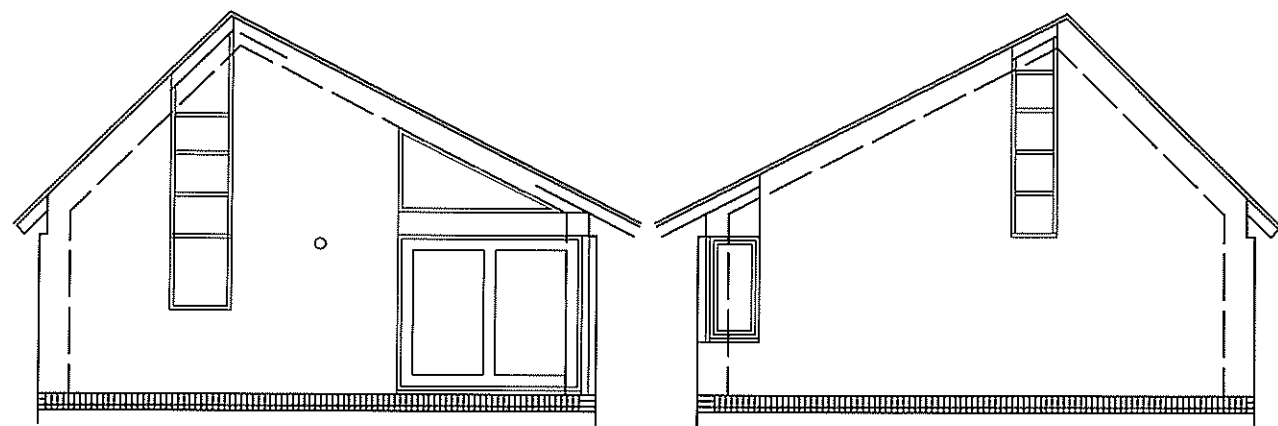
ENTRANCE ELEVATION

MANUAL CONTROLS TO COMPLY WITH BUILDING REG GUIDENCE NOTE 4.8.5 INCL ALL SWITHES SOCKETS ETC 350MM FROM INTERNAL WALL AND AS DRW A-(22)-8
RODDING ACCESS AT BASE OF SVP



LIVINGROOM ELEVATION

R REVERSIBLE
F FIXED GLAZING
EE EMERGENCY ESCAPE 0.33M2 MIN + 450mm MIN
EA EMERGENCY ACCESS 0.33M2 MIN + 450mm MIN
PD PATIO DOOR
SB SAND BLASTED REVERSIBLE
SBP SAND BSTED DOUBLE GLAZED FIXED PANEL

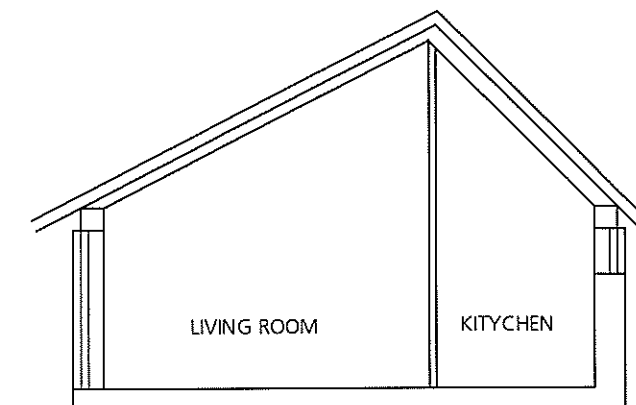


LIVINGROOM GABLE

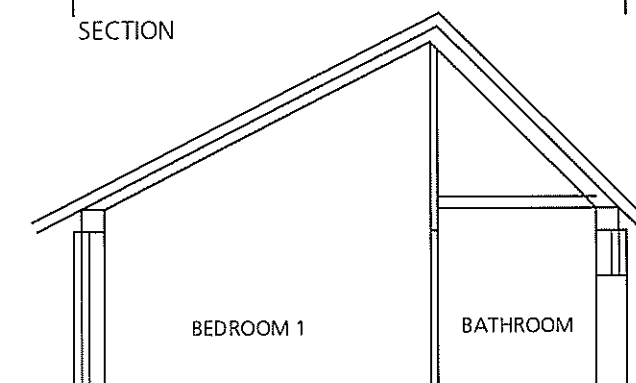
BEDROOM GABLE

SYMBOL DESCRIPTION

- ◻ CONSUMER UNIT WITH ELCB + SP METER, CABLE HEAD ETC
- ⬇ LIGHT SWITCH 1WAY DOOR HANDLE HEIGHT
- ⬆ LIGHT SWITCH 2WAY DOOR HANDLE HEIGHT
- ⬇ LIGHT SWITCH INTERMEDIATE DOOR HANDLE HEIGHT
- ⊗ 1 GANG 13A SW. SOCKET (FLUSH)
- ⊗ 2 GANG 13A SW. SOCKET (FLUSH)
- ⊗ 2 GANG 13A SW. SOCKET (FLUSH) 150 ABOVE WORK TOP
- ▲ UNSWITCHED FUSED SPUR UNIT
- ▲ D.P. SWITCHED FUSED SPUR UNIT
- ⊗ SMOKE DETECTOR
- PENDANT LIGHT FITTING BULB HOLDER AT 2.200 F.FFL
- WALL MOUNTED LIGHT FITTING AT 2.000 F.FFL
- 1.200 L SINGLE TUBE FLUORESCENT LIGHT
- ⬇ BELL PUSH
- ⊗ DOOR BELL Fredland D6 431 recessed (into jamb) illuminated
- ▲ TELEPHONE OUTLET
- ▲ TV + FM OUTLET
- ▲ SHAVR SOCKET + STRIP LIGHT
- ⊗ COOKER EXTRACT 30L/SEC WITH ACCESSIBLE ISOLATING SWITCH
- ⊗ EXTRACT FAN 15L/SEC
- ▲ COOKER SPUR
- ⊗ COOKER CONTROL
- ⊗ INSTANTANEOUS ELECTRIC SHOWER
- ⊗ BOILER + ELECT SUPPLY + CONTROLS
- ⊗ RADIATOR TOP OF RAD 100mm MIN BELOW CILL BOARD
- ⊗ SEMI SUBMERGED GAS METER BOX
- ACCESSIBLE ISOLATING SWITCH REQ FOR R'FRIDGE AND WM
- PASSIVENT
- ⊗ HEAT DETECTOR

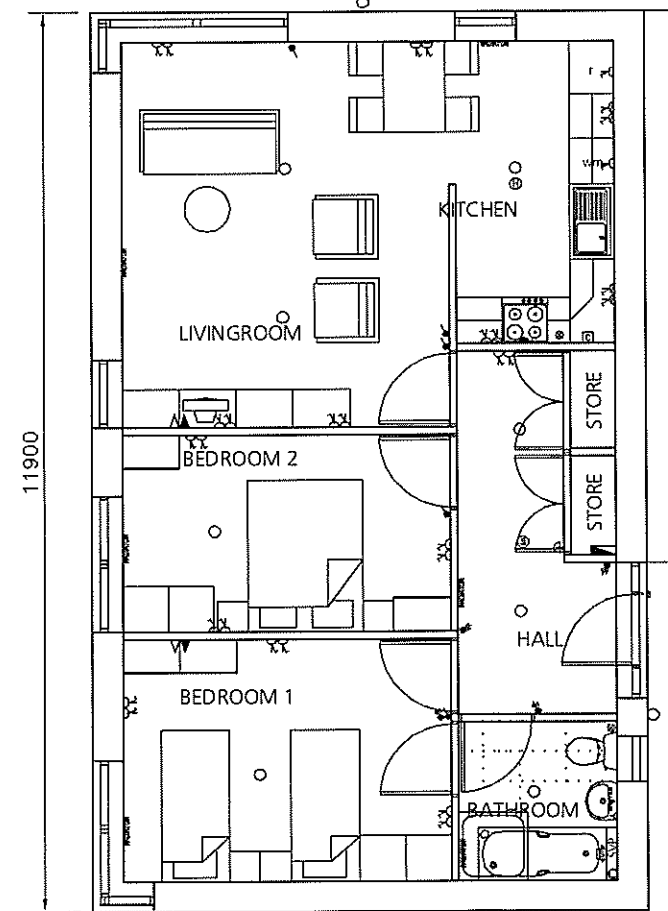


SECTION



SECTION

7300



4P GROUND FLOOR
72.15 m2

Revision	Description	By	Date	Revision	Description	By	Date

Notes	Drawn	Austin-Smith:Lord LLP
	HRR	Architects Designers Planners
	Date 26.6.2012	Landscape Architects
	Checked GR	
	Date 26.6.2012	
	Scale 1:100 AT A1	202 Bath Street
	Scale 1:100 AT A3	Glasgow G2 4HW
	Status	0181 331 0401
		0181 331 0501
		e glax@austrin-smith.com

Austin-Smith:Lord

Project: Handford Terrace

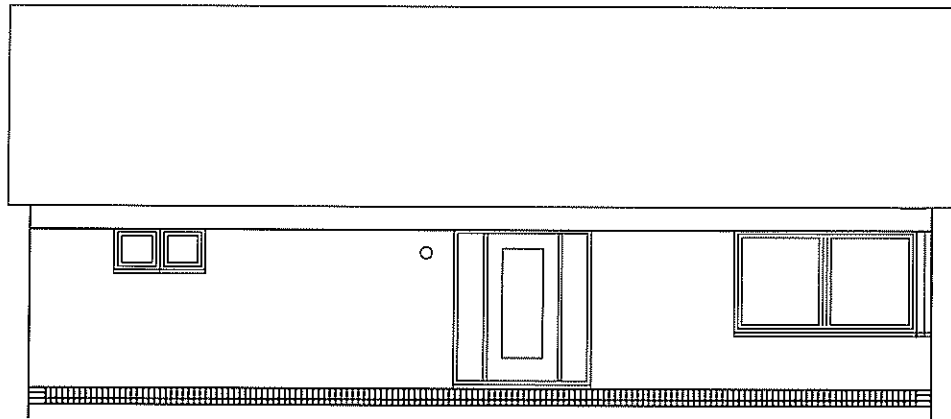
Client: DAILY

Description: 4 PERIOD HOUSE TYPE

Corner House

Job No: 212133 Drawing No: (L) 54A Revision:

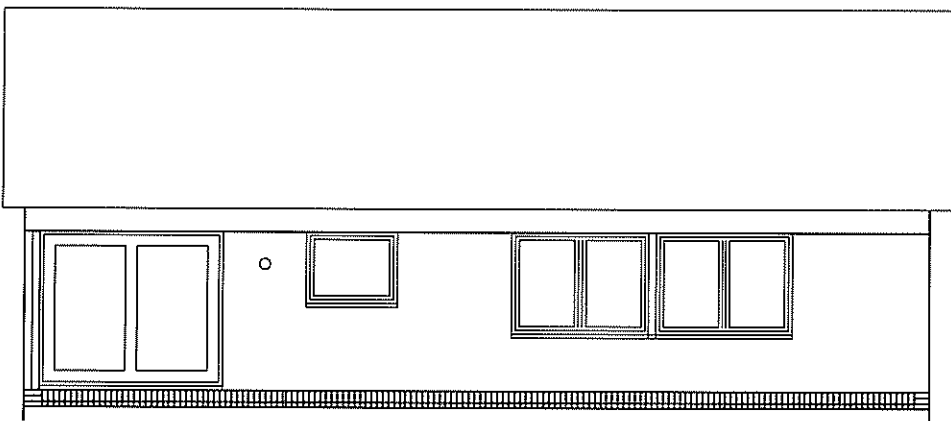
MANUAL CONTROLS TO COMPLY WITH BUILDING REG GUIDENCE NOTE 4.8.5 INCL ALL SWITHES SOCKETS ETC 350MM FROM INTERNAL WALL AND AS DRW A-(22)-B
RODDING ACCESS AT BASE OF SVP



ENTRANCE ELEVATION

R REVERSIBLE
F FIXED GLAZING
EE EMERGENCY ESCAPE 0.33M2 MIN + 450mm MIN
EA EMERGENCY ACCESS 0.33M2 MIN + 450mm MIN
PD PATIO DOOR
SB SAND BLASTED REVERSIBLE
SBP SAND BSTD DDUBLE GLAZED FIXED PANEL

MANUAL CONTROLS TO COMPLY WITH BUILDING REG GUIDENCE NOTE 4.8.5 INCL ALL SWITHES SOCKETS ETC 350MM FROM INTERNAL WALL AND AS DRW A-(22)-B
RODDING ACCESS AT BASE OF SVP

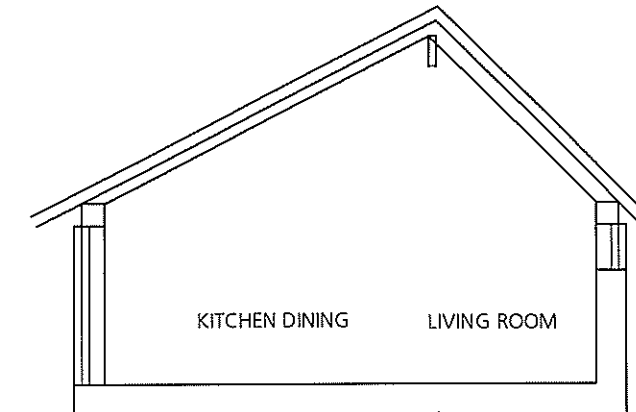


LIVINGROOM ELEVATION

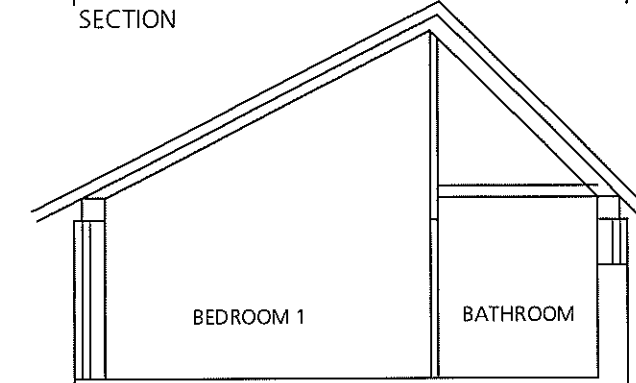
R REVERSIBLE
F FIXED GLAZING
EE EMERGENCY ESCAPE 0.33M2 MIN + 450mm MIN
EA EMERGENCY ACCESS 0.33M2 MIN + 450mm MIN
PD PATIO DOOR
SB SAND BLASTED REVERSIBLE
SBP SAND BSTD DDUBLE GLAZED FIXED PANEL

SYMBOL DESCRIPTION

- CONSUMER UNIT WITH ELCS + SP METER, CABLE HEAD ETC
- LIGHT SWITCH 1WAY DOOR HANDLE HEIGHT
- LIGHT SWITCH 2WAY DOOR HANDLE HEIGHT
- LIGHT SWITCH INTERMEDIATE DOOR HANDLE HEIGHT
- 1 GANG 13A SW. SOCKET (FLUSH)
- 2 GANG 13A SW. SOCKET (FLUSH)
- 2 GANG 13A SW. SOCKET (FLUSH) 150 ABOVE WORK TOP
- UNSWITCHED FUSED SPUR UNIT
- D.P. SWITCHED FUSED SPUR UNIT
- SMOKE DETECTOR
- PENDANT LIGHT FITTING BULB HOLDER AT 2.200 F.FFL
- WALL MOUNTED LIGHT FITTING AT 2.000 F.FFL
- 1.200 L SINGLE TUBE FLUORESCENT LIGHT
- BELL PUSH
- DOOR BELL Friedland D6 431 recessed (into jamb) illuminated
- TELEPHONE OUTLET
- TV + FM OUTLET
- SHAVR SOCKET + STRIP LIGHT
- COOKER EXTRACT 30L/SEC WITH ACCESSIBLE ISOLATING SWITCH
- EXTRACT FAN 15L/SEC
- COOKER SPUR
- COOKER CONTROL
- INSTANTANEOUS ELECTRIC SHOWER
- BOILER + ELECT SUPPLY + CONTROLS
- RADIATOR TOP OF RAD 100mm MIN BELOW CILL BOARD
- SEMI SUBMERGED GAS METER BOX
- ACCESSIBLE ISOLATING SWITCH REQ FOR R'FRIDGE AND WM
- PASSIVENT
- HEAT DETECTOR

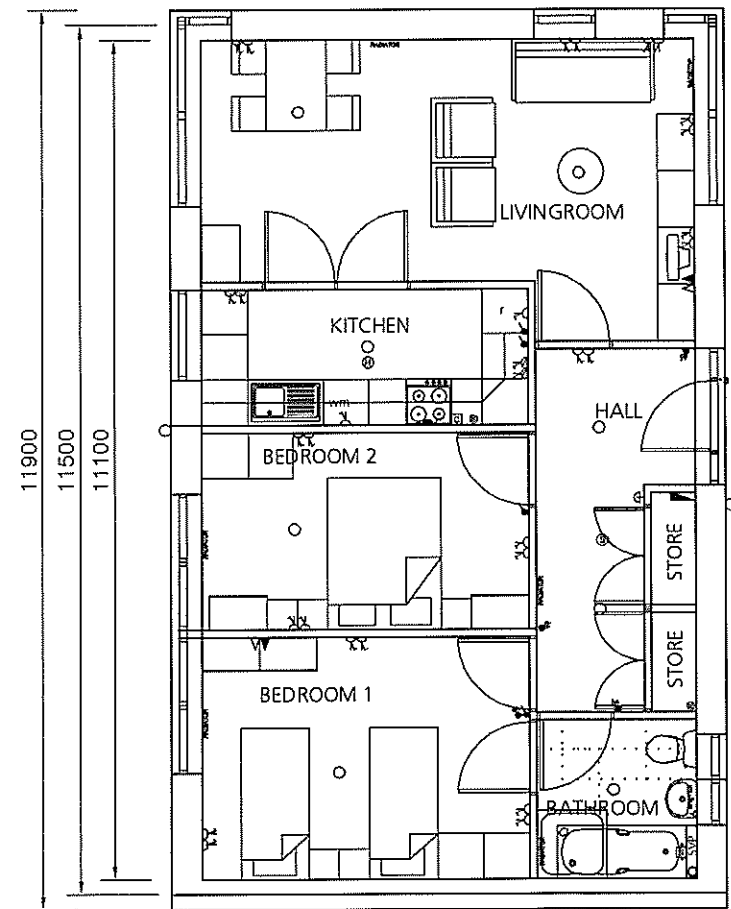


SECTION



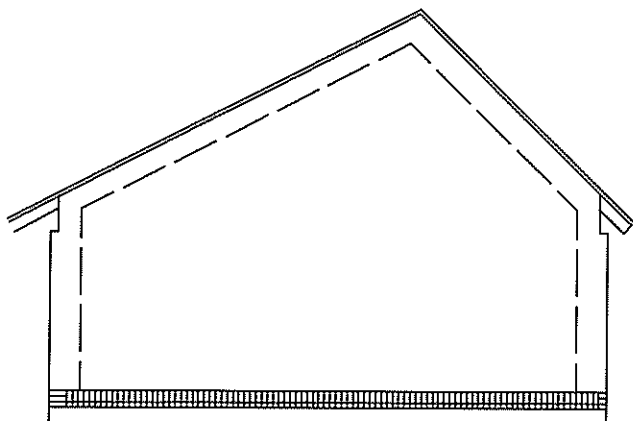
SECTION

7300

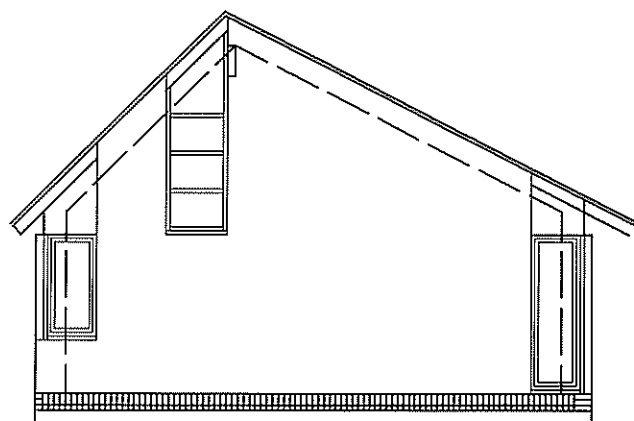


11900
11500
11100

4P GROUND FLOOR
72.15 m2



BEDROOM GABLE



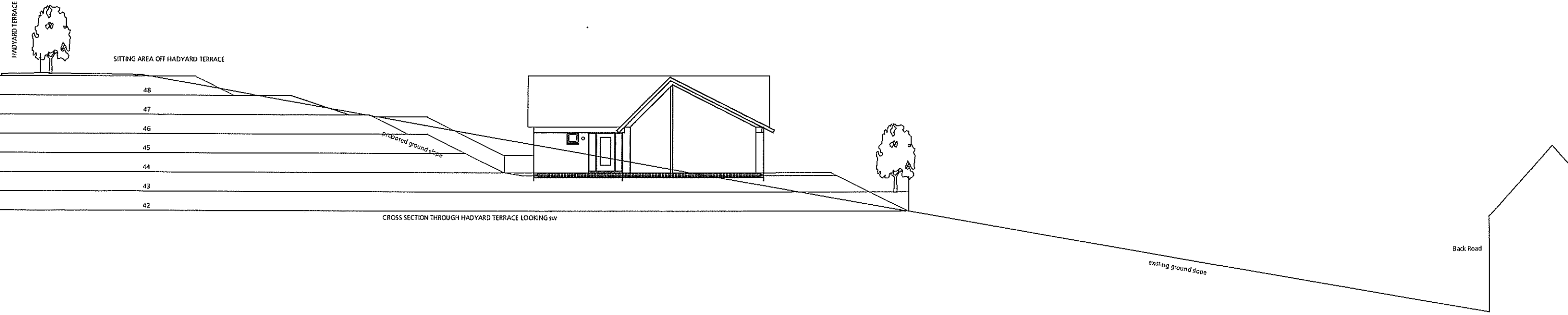
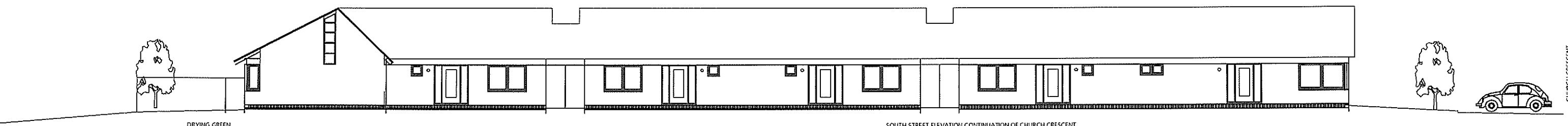
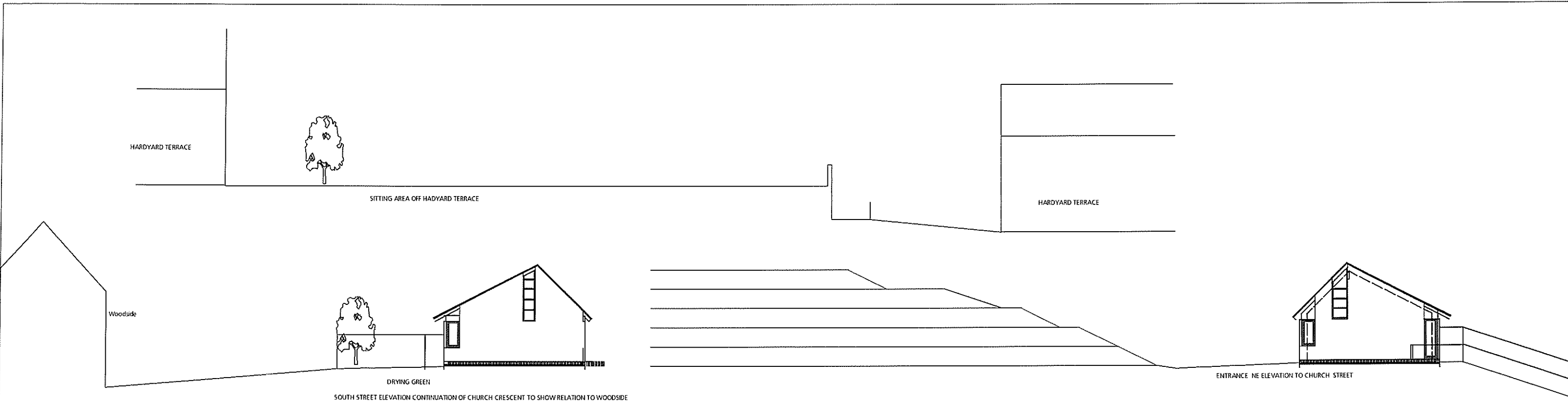
LIVINGROOM GABLE

Revision	Description	By	Date	Revision	Description	By	Date

Notes	Drawn	Checked	Date

Austin-Smith:Lord
 Architects Designers Planners
 Landscape Architects
 202 Bath Street
 Glasgow G2 4HW
 t 0141 331 0401
 f 0141 331 0501
 e g.lord@austin-smith.com

Project: **Handford Terrace**
 Designation: **4 PERSON HOUSE TYPE**
 Job No: **212133** Drawing No: **(L) 54C** Revision:



existing houses eaves and ridge heights and ground levels from suney

Revision	Description	By	Date	Revision	Description	By	Date	Revision	Description	By	Date

Drawn: HSR
 Date: 5/4/2013
 Checked: GR
 Date: 5/4/2013
 Scale: 1 TO 100 AT A1
 1 TO 200 AT A3
 Status:

Austin Smith & Lord LLP
 Architects Designers Planners
 Landscape Architects
 202 Bath Street
 Glasgow G2 4HW
 t 0141 331 0401
 f 0141 331 0501
 e glasgow@austinsmithlord.com

Austin Smith & Lord
 Project: Hadyard Terrace
 Description: CROSS SECTION AND STREET ELEVATIONS
 Job No: 212133
 Drawing No: (L) CS
 Revision: _____